

BRYAN O'SULLIVAN
COLLECTION

AMANITA



BRYAN O'SULLIVAN
COLLECTION



W 22 D 22 H 47 CM
W 8.7 D 8.7 H 18.5 IN

BRYAN O'SULLIVAN
COLLECTION



AMANITA

A HAND-BLOWN TWO-TIER TABLE LIGHT MADE IN
TRADITIONAL BULLICANTE GLASS, WITH CAST BRASS
FINIALS

BRYAN O'SULLIVAN
COLLECTION

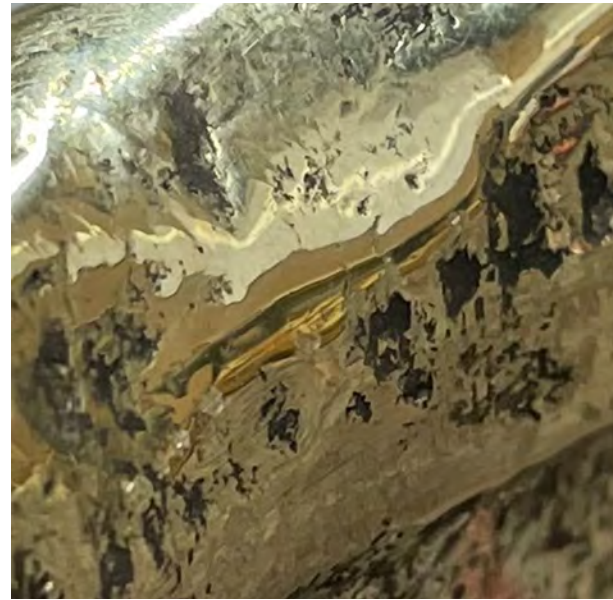


BRYAN O'SULLIVAN
COLLECTION



HAND BLOWN BULLICANTE GLASS

EVERY GLASS PIECE IS METICULOUSLY HANDMADE, UTILIZING TIME-HONORED METHODS. DUE TO THIS ARTISANAL APPROACH, MINOR DISTINCTIONS CAN BE ANTICIPATED, ADDING TO THE UNIQUENESS OF EACH PIECE, ENSURING IT IS TRULY ONE OF A KIND



POLISHED CAST BRASS