

BRYAN O'SULLIVAN  
COLLECTION

AMANITA



BRYAN O'SULLIVAN  
COLLECTION



W 22 D 22 H 47 CM  
W 8.7 D 8.7 H 18.5 IN

BRYAN O'SULLIVAN  
COLLECTION



**AMANITA**

A HAND-BLOWN TWO-TIER TABLE LIGHT MADE IN  
TRADITIONAL BULLICANTE GLASS, WITH CAST BRASS  
FINIALS

BRYAN O'SULLIVAN  
COLLECTION

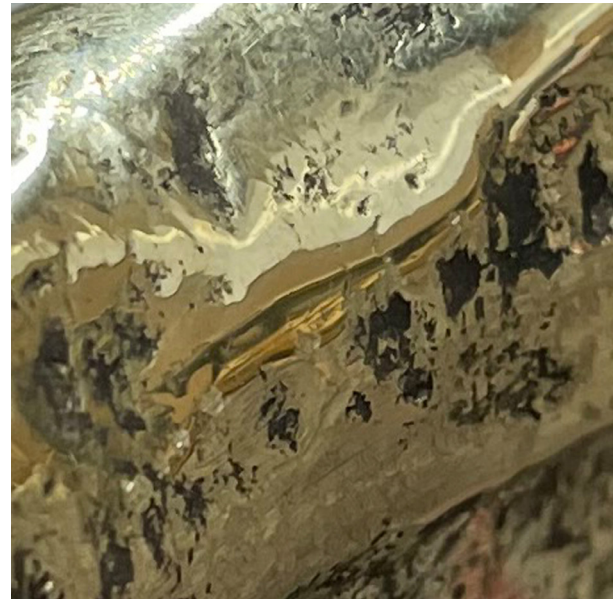


BRYAN O'SULLIVAN  
COLLECTION



**HAND BLOWN BULLICANTE GLASS**

EVERY GLASS PIECE IS METICULOUSLY HANDMADE, UTILIZING TIME-HONORED METHODS. DUE TO THIS ARTISANAL APPROACH, MINOR DISTINCTIONS CAN BE ANTICIPATED, ADDING TO THE UNIQUENESS OF EACH PIECE, ENSURING IT IS TRULY ONE OF A KIND



**POLISHED CAST BRASS**